

Smooth Coupling Band
for Smooth Pipe

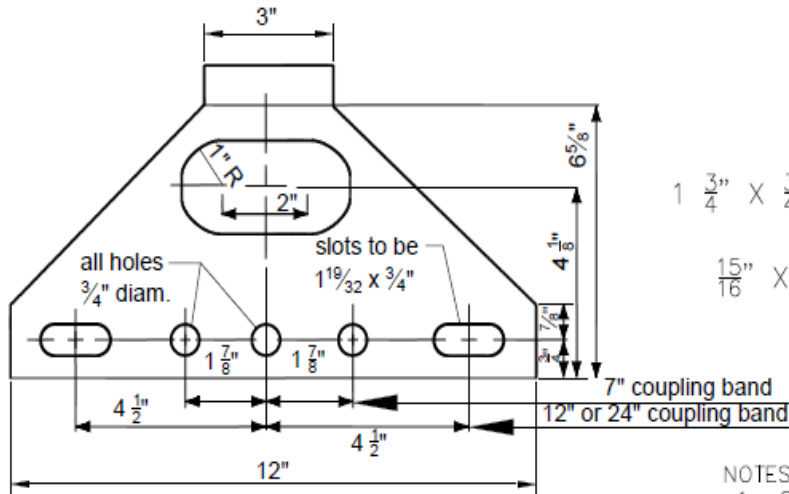
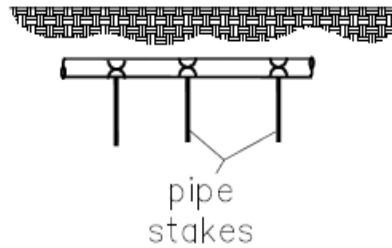
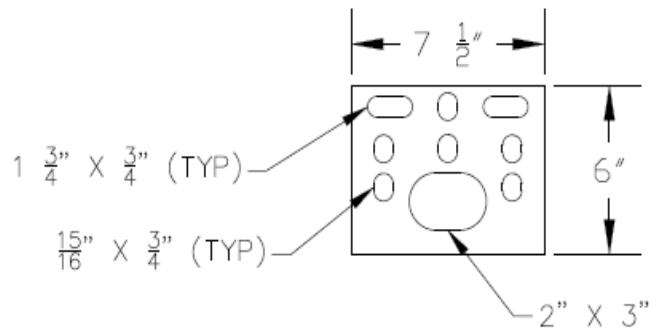
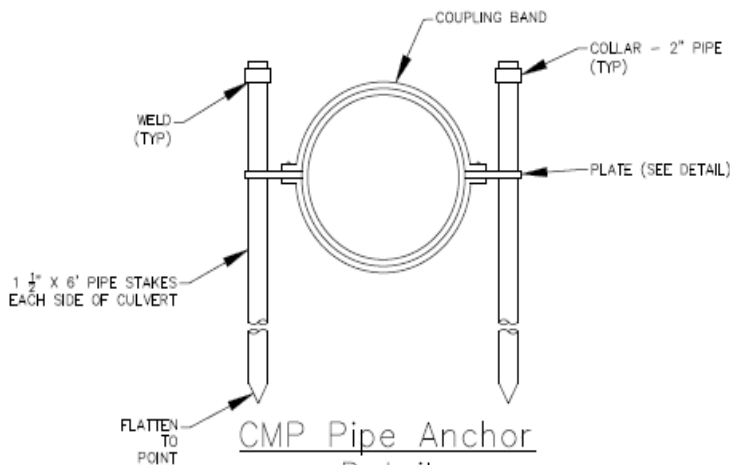


Plate Detail



NOTES:

1. STAKES AND PLATES SHALL BE GALVANIZED PER ASTM A 36 AND A 153.
2. THE SMOOTH COUPLING BAND SHALL BE PER WSDOT STD PLANS B-60.20-01 AND B-60.20-01 AND USED IN COMBINATION WITH CONCRETE PIPE.
3. CONCRETE PIPE WITHOUT A BELL AND SPIGOT CONNECTION SHALL NOT BE INSTALLED ON GRADES IN EXCESS OF 20%.
4. THE FIRST ANCHOR SHALL BE INSTALLED ON THE FIRST SECTION OF THE LOWER END OF THE PIPE; THE REMAINING ANCHORS SHALL BE EVENLY SPACED THROUGHOUT THE INSTALLATION.
5. IF THE PIPE BEING INSTALLED HAS A MANHOLE OR CATCH BASIN ON THE LOWER END OF THE PIPE, THE FIRST PIPE ANCHOR MAY BE ELIMINATED.
6. WHEN CMP IS USED, THE ANCHORS MAY BE ATTACHED TO THE COUPLING BANDS USED TO JOIN THE PIPE AS LONG AS THE SPECIFIED SPACING IS NOT EXCEEDED.
7. ALL PIPE ANCHORS SHALL BE SECURELY INSTALLED BEFORE BACKFILLING AROUND THE PIPE.



CMP Pipe Anchor
Detail

NTS



Figure II-4.5. Corrugated Metal Pipe Coupling Anchor Assembly