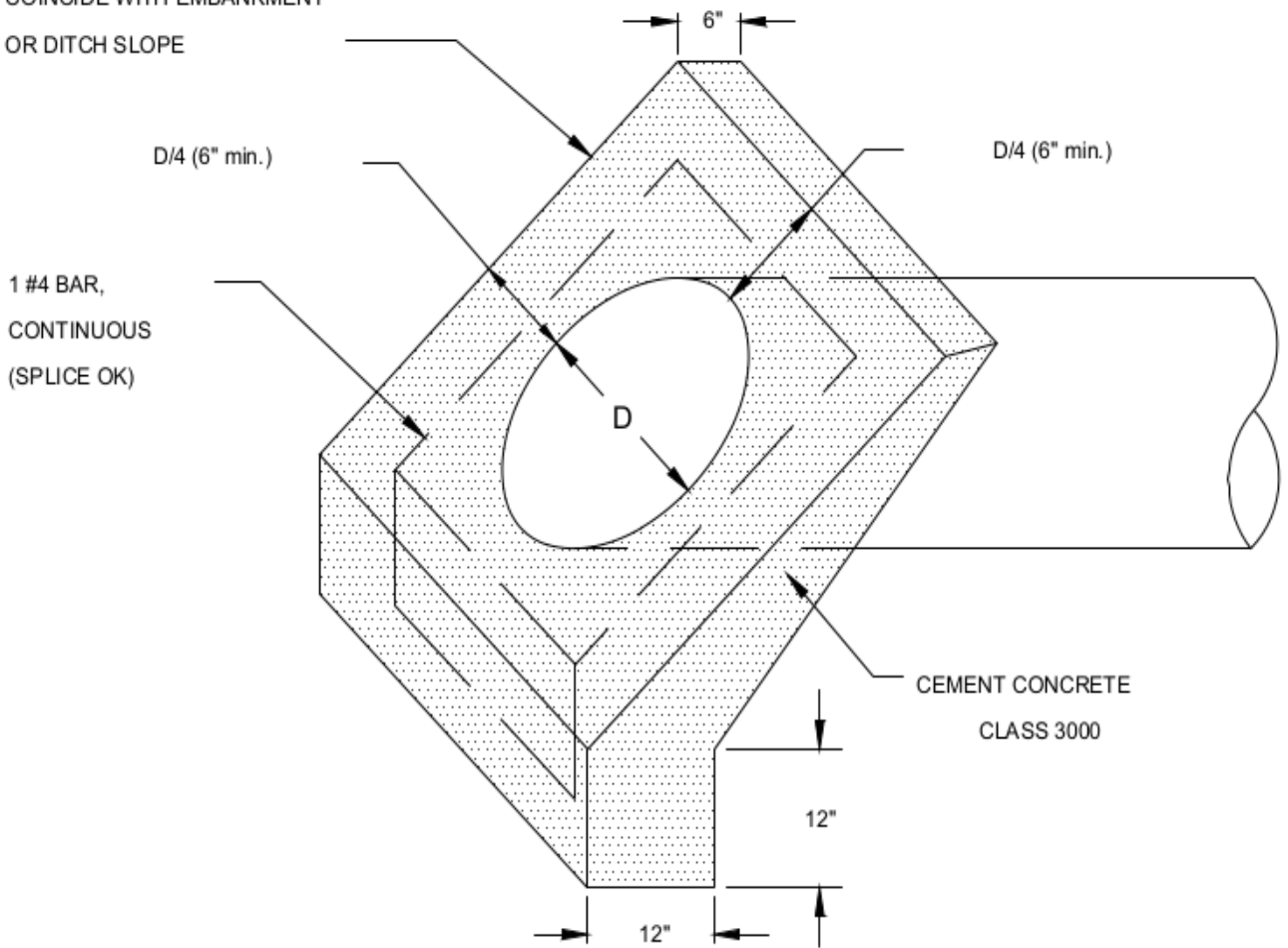


SLOPE FRONT FACE TO  
COINCIDE WITH EMBANKMENT  
OR DITCH SLOPE



NOTE:

REINFORCING STEEL SHALL HAVE 1 1/2 INCH CLEAR  
COVER TO ALL CONCRETE SURFACES AND SHALL BE  
GRADE 40 OR GRADE 60.



**Figure II-4.10. Concrete End Protection**